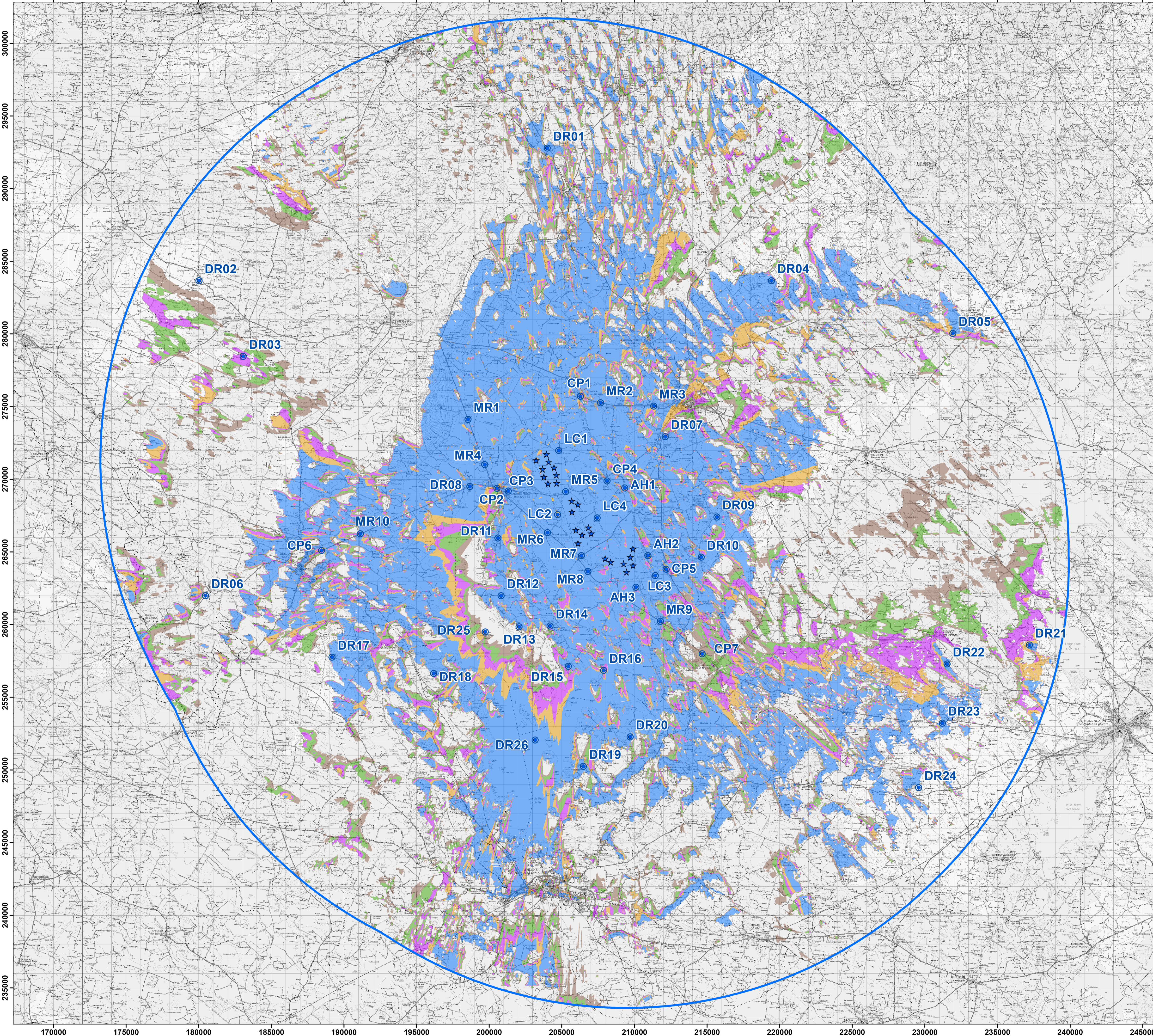


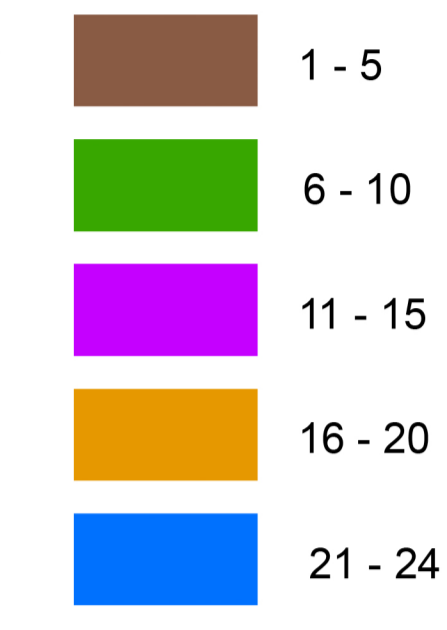
# Appendix 9.3.1: ZTV (Zone of Theoretical Visibility) indicating areas that have a potential view of the proposed turbines at Derradd (calculated for hub height = 120m)



## Proposed Derradd Turbines



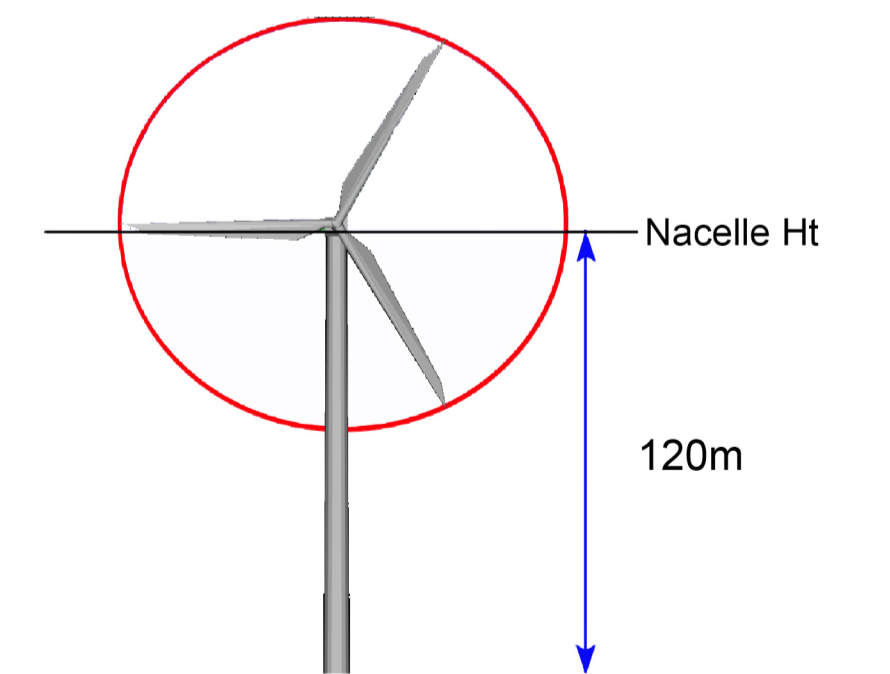
## No. Turbines Visible



## Photomontage Viewpoints



## 30km Extent



This ZTV map has been calculated such that a turbine registers as being theoretically visible to observers in the surrounding landscape once there is an unobstructed line of sight to its nacelles.

Observer Height assumed: 2m to eye-level height  
Nacelle Heights: 120m

Note: This ZTV map is calculated for landform screening only and does not take account of the significant screening effects of vegetation (hedgerows, trees) and buildings inherent across the study area.

